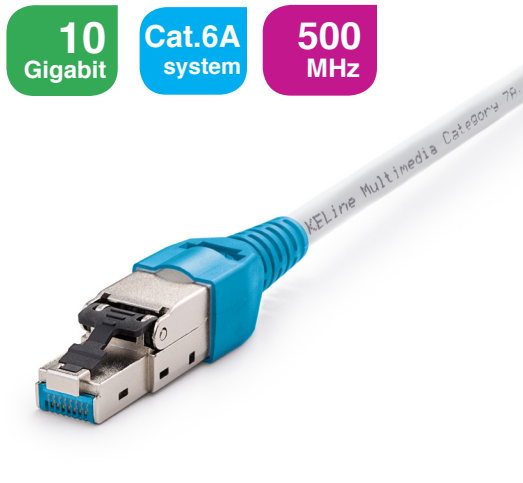


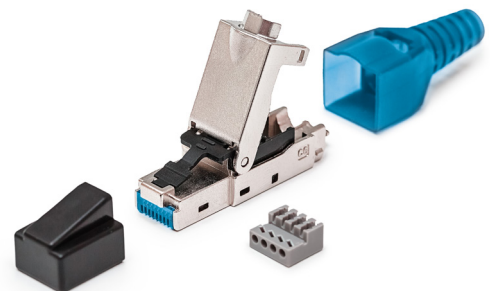
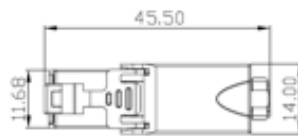
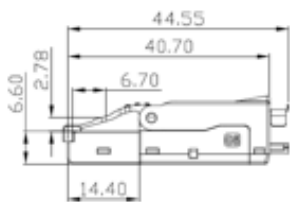
Toolless FM45/s connector for direct termination on Cat.7_A, Cat.7, Cat.6_A, Cat.6 cables

P/N: KE-FT45-C6AS



features

- direct termination on Cat.7_A, Cat.7, Cat.6_A, Cat.6 cables
- tool-free, fast and easy installation
- ideal for IP camera and wireless devices connection without the need of using outlets and patch cords
- enables transmission of all high-speed protocols including 10GBASE-T within the system Cat.6A
- guarantees a bandwidth of 500 MHz within the system Cat.6A
- perfectly shielded against Alien Crosstalk and electromagnetic interference



mechanical properties

| | |
|----------------------------|---|
| Suitable for installing on | cables with solid wires from AWG 26 to AWG 22 |
| | cables with stranded wires from AWG 27 to AWG 22 |
| | cables with outer diameter 6 - 9 mm |
| Housing material | nickel-plated die-cast zinc |
| Contact pin material | phosphor-bronze alloy coated with 50 μ of gold |
| IDC reterminations | min. 5 |
| Insulation resistance | 500 MΩ min |
| Contact resistance | 20 mΩ max |
| Current rating | 1,5 A |
| Test voltage | 1000V DC, 1min |
| Temperature range | -20 °C to +70 °C |